



Federazione
Motociclistica
Italiana

CAMPIONATI ITALIANI ENDURO

MINIENDURO 125

MC DEL GARDA

Pietramurata (TN), 03-04-2022



CODICE GARA: NAZEN017

2^PROVA

CLASSIFICA INDIVIDUALE DELLA GIORNATA 2

POS	NUM	LICENZA	CONCORRENTE	CLS	POS	AN	RNK	MOTOCUB	REG	CO	PEN	TOTALE	C.G.	PT
125 Mini														
1	102	R03518	PASQUATO Riccardo	MEA	1	06	153.64	GAERNE YAMAHA 125 2T	VEN			29' 04.40		20
			2' 43.70 (1)				4' 30.03 (2)				2' 42.14 (1)			
			4' 32.11 (1)				2' 48.56 (4)				4' 40.34 (4)			
2	101	R00018	CAGNONI Simone	MEA	2	06	149.07	BERGAMO/SC. PONTE NOSSA MC B VENT HM 125 2T	LOM			29' 17.27		17
			2' 47.40 (2)				4' 26.52 (1)				2' 47.22 (2)		12.87	
			4' 47.91 (9)				2' 46.91 (1)				4' 28.97 (1)			
3	106	T00215	BERGER Alessio	MEA	3	06	196.70	G.S.FIAMME ORO MILANO SHERCO 125 2T	LOM			29' 36.11		15
			2' 49.72 (3)				4' 31.51 (3)				2' 50.12 (4)		31.71	
			4' 34.20 (2)				2' 48.73 (5)				4' 29.80 (2)			
4	104	R02940	GUASTINI Niko	MEA	4	07	191.74	BOJAWA RACING TEAM BETA 125 2T	TOS			29' 48.25		13
			2' 50.24 (4)				4' 42.21 (6)				2' 50.60 (5)		43.85	
			4' 35.74 (3)				2' 47.99 (2)				4' 35.53 (3)			
5	111	Q04042	CASAMENTI Sebastiano	MEA	5	06	215.54	CROSTOLO HUSQVARNA 125 2T	EMI			30' 01.85		11
			2' 53.27 (6)				4' 38.02 (4)				2' 50.01 (3)		57.45	
			4' 36.87 (4)				2' 51.81 (8)				4' 42.05 (6)			
6	115	S03455	BUSATTA Cristiano	MEA	6	08	228.78	BERGAMO YAMAHA 125 2T	LOM			30' 14.95		10
			2' 50.27 (5)				4' 44.58 (8)				2' 53.08 (7)		1' 10.55	
			4' 39.97 (6)				2' 48.98 (6)				4' 40.53 (5)			
7	112	S01067	D'AGATA Simone Michele	MEA	7	06	215.75	SICILIA A.S.D. GAS GAS 125 2T	SIC			30' 28.04		9
			3' 01.28 (12)				4' 47.23 (9)				2' 51.73 (6)		1' 23.64	
			4' 37.43 (5)				2' 48.54 (3)				4' 43.73 (7)			
8	108	S05272	MOSCA Pierpaolo	MEA	8	08	203.34	SICILIA A.S.D. KTM 125 2T	SIC			30' 41.72		8
			2' 56.04 (8)				4' 51.96 (12)				2' 55.00 (8)		1' 37.32	
			4' 41.57 (8)				2' 54.09 (9)				4' 44.32 (8)			
9	119	R02055	PIVETTA Filippo	MEA	9	07	239.70	GAERNE KTM 125 2T	VEN			30' 42.21		7
			2' 58.80 (10)				4' 40.72 (5)				2' 56.62 (10)		1' 37.81	
			4' 40.97 (7)				2' 57.59 (11)				4' 48.34 (9)			
10	110	S00983	MARCONATO Sunny	MEA	10	07	211.72	GAERNE HUSQVARNA 125 2T	VEN			30' 57.47		6
			2' 56.39 (9)				4' 44.49 (7)				2' 58.89 (12)		1' 53.07	
			4' 47.96 (10)				2' 57.54 (10)				4' 51.69 (12)			
11	113	R03864	SCARPENTI Kevvn	MEA	11	06	222.64	VAL LURETTA HUSQVARNA 125 2T	EMI			31' 11.32		5
			2' 55.00 (7)				4' 51.46 (11)				2' 57.25 (11)		2' 06.92	
			4' 48.55 (11)				2' 57.59 (11)				4' 53.06 (13)			
12	109	R00578	PECORARI Samuele	MEA	12	06	211.33	PEPE BEVAGNA KTM 125 2T	UMB			31' 38.81		4
			3' 01.03 (11)				4' 49.70 (10)				2' 59.91 (13)		2' 34.41	
			4' 53.87 (13)				3' 00.12 (14)				4' 58.94 (14)			

CPP-2.99. GEN/ 1

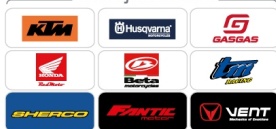
Official Supplier:



Official Logistic:



Motorcycle Partners:



Sponsored by:



Tech Partners:



Off Road Village Partners:





POS	NUM	LICENZA	CONCORRENTE	CLS	POS	AN	RNK	MOTOCUB	REG	CO	PEN	TOTALE	C.G.	PT
MOTO														
13	103	T00208	MARGARITO Mauro Rolando	MEA	13	06	186.22	INTIMIANO N. NOSEDA KTM 125 2T	LOM			31' 41.53 2' 37.13		3
			3' 10.01 (15)					2' 56.06 (9)				4' 57.17 (14)		2' 56.29 (9)
			4' 50.18 (12)					4' 48.99 (10)						
14	130	X05571	ALESSANDRINI Marco	MEA	14	06	281.68	CECI CORSE KTM 125 2T	LAZ			32' 30.29 3' 25.89		2
			3' 33.49 (26)					3' 07.52 (15)				4' 54.31 (12)		3' 00.82 (14)
			4' 55.00 (14)					4' 50.48 (11)						
15	117	X07696	SANTI Mattia	MEA	15	07	237.60	BOJAWA RACING TEAM YAMAHA 125 2T	TOS			32' 59.29 3' 54.89		1
			3' 13.51 (18)					3' 05.77 (14)				5' 14.88 (20)		3' 13.63 (19)
			4' 59.15 (15)					5' 05.35 (15)						
16	124	T01528	STELLA Lorenzo	MEA	16	07	259.27	OSTRA BETA 125 2T	MAR			33' 09.32 4' 04.92		
			3' 05.12 (14)					3' 08.59 (16)				5' 05.70 (15)		3' 09.55 (15)
			5' 09.06 (16)					5' 08.04 (16)						
17	123	X01439	MEDICA Cristian	MEA	17	06	254.42	BERGAMO YAMAHA 125 2T	LOM			33' 26.83 4' 22.43		
			3' 12.54 (16)					3' 12.32 (17)				5' 08.30 (16)		3' 09.87 (16)
			5' 13.38 (19)					5' 08.64 (17)						
18	118	S05463	MOLINARO Andrea	MEA	18	07	238.99	HARD TRACKS VARIANO HUSQVARNA 125 2T	FVG			34' 08.69 5' 04.29		
			3' 21.94 (20)					3' 14.02 (19)				5' 18.22 (21)		3' 18.67 (23)
			5' 10.54 (17)					5' 13.02 (18)						
19	131	V02372	SIMONE Amedeo	MEA	19	08	284.78	TRE LAGHI DUE FANTIC 125 2T	LOM			34' 15.11 5' 10.71		
			3' 16.02 (19)					3' 20.32 (24)				5' 13.29 (19)		3' 18.14 (22)
			5' 11.39 (18)					5' 16.01 (20)						
20	121	R01986	FIORILLI Niccolò	MEA	20	06	246.82	TORRE DELLA MELORIA FANTIC 125 2T	TOS			34' 28.99 5' 24.59		
			3' 36.86 (27)					3' 13.34 (18)				5' 11.36 (18)		3' 13.23 (17)
			5' 24.18 (21)					5' 24.69 (22)						
21	120	T01223	TORNABONI Nicolas	MEA	21	07	240.04	PONTERA YAMAHA 125 2T	TOS			34' 49.51 5' 45.11		
			3' 42.48 (29)					3' 14.35 (20)				5' 11.27 (17)		3' 17.35 (20)
			5' 14.89 (20)					5' 17.67 (21)						
22	122	T03238	GATTI Mattia	MEA	22	08	253.13	G.S.FIAMME ORO MILANO HUSQVARNA 125 2T	LOM			35' 03.03 5' 58.63		
			3' 13.47 (17)					3' 17.70 (21)				5' 20.08 (22)		3' 13.44 (18)
			6' 19.85 (30)					5' 14.82 (19)						
23	126	R01856	BRUSCHI Marcello	MEA	23	07	268.68	VAL LURETTA YAMAHA 125 2T	EMI			35' 52.29 6' 47.89		
			3' 23.11 (22)					3' 39.54 (29)				5' 44.95 (26)		3' 22.27 (24)
			5' 37.41 (25)					5' 32.90 (26)						
24	175	U01223	BOANO Jeremy	MEA	24	09	265.61	DOGLIANI TM 125 2T	PIE			36' 27.53 7' 23.13		
			3' 22.68 (21)					3' 24.29 (26)				5' 28.85 (25)		3' 22.78 (25)
			5' 44.57 (27)					5' 55.13 (29)						
25	143	Y01368	CRISTINI Andreas	MEA	25	07	363.44	RS 77 KTM 125 2T	LOM			36' 28.82 7' 24.42		
			3' 40.14 (28)					3' 18.58 (22)				5' 26.40 (24)		4' 01.18 (35)
			5' 35.87 (24)					5' 28.86 (24)						
26	133	R02688	POZZONI Fabio	MEA	26	07	294.58	FAST TEAM HUSQVARNA 125 2T	LOM			36' 32.93 7' 28.53		
			3' 23.41 (23)					3' 19.57 (23)				5' 23.60 (23)		3' 17.69 (21)
			6' 53.55 (35)					5' 27.04 (23)						
27	114	V03406	MEAZZINI Francesco	MEA	27	07	225.81	TEAM CEI MOTO HUSQVARNA 125 2T	TOS			36' 36.93 7' 32.53		
			3' 02.17 (13)					3' 43.81 (32)				5' 59.29 (30)		4' 28.20 (36)
			5' 26.62 (22)					5' 29.66 (25)						
28	134	S02126	MANCINI Matteo	MEA	28	07	299.20	PONTE SAN GIOVANNI HUSQVARNA 125 2T	UMB			37' 32.48 8' 28.08		
			3' 32.34 (25)					3' 32.15 (27)				5' 55.66 (29)		3' 24.24 (26)
			5' 38.46 (26)					5' 38.58 (27)						

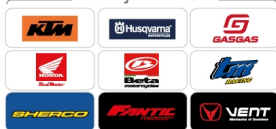
Official Supplier:



Official Logistic:



Motorcycle Partners:



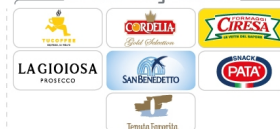
Sponsored by:



Tech Partners:



Off Road Village Partners:





POS	NUM	LICENZA	CONCORRENTE	CLS	POS	AN	RNK	MOTOCLUB	REG	CO	PEN	TOTALE	C.G.	PT
MOTO														
29	144	U01998	NUVOLONI Leonardo	MEA	29	07	364.62	MISINTO A. BERGAMONTI HUSQVARNA 125 2T	LOM			37' 40.65 8' 36.25		
			3' 54.58 (30) 5' 56.40 (31)					3' 23.49 (25) 5' 51.33 (28)				3' 25.76 (27)		
			5' 30.35 (23) 3' 28.29 (27)					6' 10.45 (31)						
30	138	W00923	SANTORO Mattia	MEA	30	06	323.22	STAYOFFROAD KTM 125 2T	PUG			38' 54.99 9' 50.59		
			3' 25.72 (24) 5' 55.26 (30)					3' 59.05 (34) 5' 45.62 (27)				3' 41.80 (29)		
			5' 55.70 (28) 4' 00.90 (32)					6' 10.94 (32)						
31	136	U04035	BERTAZZI Alessandro	MEA	31	08	304.00	ENDURO TEAM VALSANGONE BETA 125 2T	PIE			40' 49.52 11' 45.12		
			4' 06.93 (32) 6' 14.19 (34)					3' 34.52 (28) 6' 27.97 (32)				3' 53.46 (33)		
			6' 20.81 (32) 3' 50.02 (29)					6' 21.62 (33)						
32	139	X09746	ALUNNI MINCIOTTI Edoardo	MEA	32	07	324.36	PONTE SAN GIOVANNI GAS GAS 125 2T	UMB			41' 47.88 12' 43.48		
			4' 11.13 (33) 6' 39.74 (36)					3' 45.63 (33) 6' 38.79 (34)				3' 54.01 (34)		
			6' 20.54 (31) 3' 53.08 (30)					6' 24.96 (34)						
33	137	S00341	BERRETTI Niccolo'	MEA	33	06	313.72	OSTRA BETA 125 2T	MAR			42' 01.39 12' 56.99		
			5' 00.61 (35) 5' 59.96 (32)					3' 42.47 (31) 6' 27.59 (31)				3' 50.01 (31)		
			6' 32.12 (34) 4' 18.68 (35)					6' 09.95 (30)						
34	147	Y00391	BARONI Arturo	MEA	34	06	S. R.	SEBINO HUSQVARNA 125 2T	LOM			43' 38.49 14' 34.09		
			4' 25.19 (34) 6' 02.69 (33)					5' 02.10 (38) 6' 57.00 (35)				3' 53.21 (32)		
			6' 29.52 (33) 3' 55.76 (31)					6' 53.02 (35)						
35	132	V01109	CAMACCI Damiano	MEA	35	07	285.61	MILANI KTM 125 2T	LAZ			44' 01.10 14' 56.70		
			6' 16.69 (37) 6' 22.07 (35)					3' 40.81 (30) 6' 57.90 (36)				3' 28.29 (28)		
			7' 16.49 (37) 4' 10.16 (33)					5' 48.69 (28)						
36	142	W03418	LAZZARINI Valentino	MEA	36	07	347.89	ENDURO TEAM VALSANGONE BETA 125 2T	PIE			47' 15.98 18' 11.58		
			4' 06.42 (31) 9' 37.77 (38)					4' 08.49 (36) 6' 35.94 (33)				3' 47.93 (30)		
			7' 34.54 (38) 4' 24.55 (38)					7' 00.34 (36)						
37	127	T05267	GENTILE Edoardo	MEA	37	07	269.63	PONTE SAN GIOVANNI KTM 125 2T	UMB			47' 32.62 18' 28.22		
			6' 41.32 (38) 5' 55.07 (29)					4' 04.41 (35) 7' 22.58 (37)				4' 34.20 (37)		
			6' 16.24 (29) 4' 16.51 (34)					8' 22.29 (37)						
38	145	T00505	MARNONI Davide	MEA	38	08	378.88	MISINTO A. BERGAMONTI YAMAHA 125 2T	LOM			51' 30.86 22' 26.46		
			5' 02.04 (36) 8' 40.65 (37)					4' 23.70 (37) 7' 40.98 (38)				5' 15.81 (38)		
			7' 16.12 (36) 4' 22.14 (37)					8' 49.42 (38)						

NON PARTITI

116	T01636	PANTALONE Francesco	MEA	06	237.12	CARSOLI ENDURO KTM 125 2T	ABR NP 2^PROVA PAR - PARTENZA
146	X12892	RAVAZZINI Alberto	MEA	07	416.70	CASTELLARANO BETA 125 2T	EMI NP 2^PROVA PAR - PARTENZA

NON ARRIVATI

125	R02307	MANSERVIGI Ilian	MEA	07	265.59	GRUPPO SASSO MARCONI KTM 125 2T	EMI RIT 2^PROVA PAR - PARTENZA
-----	--------	-------------------------	-----	----	--------	------------------------------------	--------------------------------

Esposta ore:

D.S. CRONOMETRAGGIO

IL DIRETTORE DI GARA